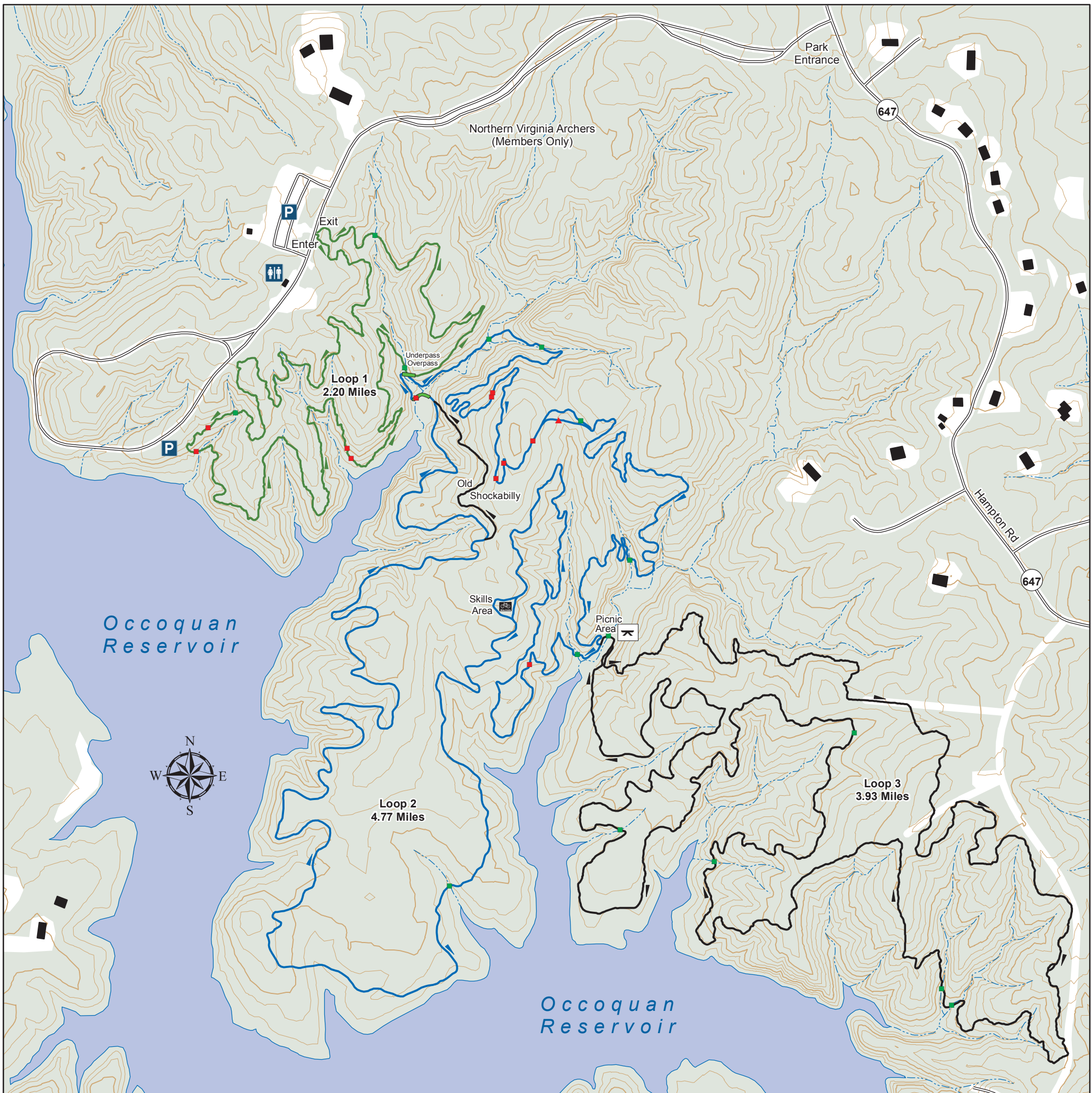


Fountainhead Regional Park Mountain Bike Trail



Trail Features

- Bridge
- Ledge
- ▲ Technical Trail Feature

Trail Difficulty

- Easy
- More Difficult
- Very Difficult

Edition 001 - May 2012



Produced by www.fambe.org

1. One way trail traffic
2. Stay on marked trails
3. Leave no trace
4. Be safe and enjoy the trails